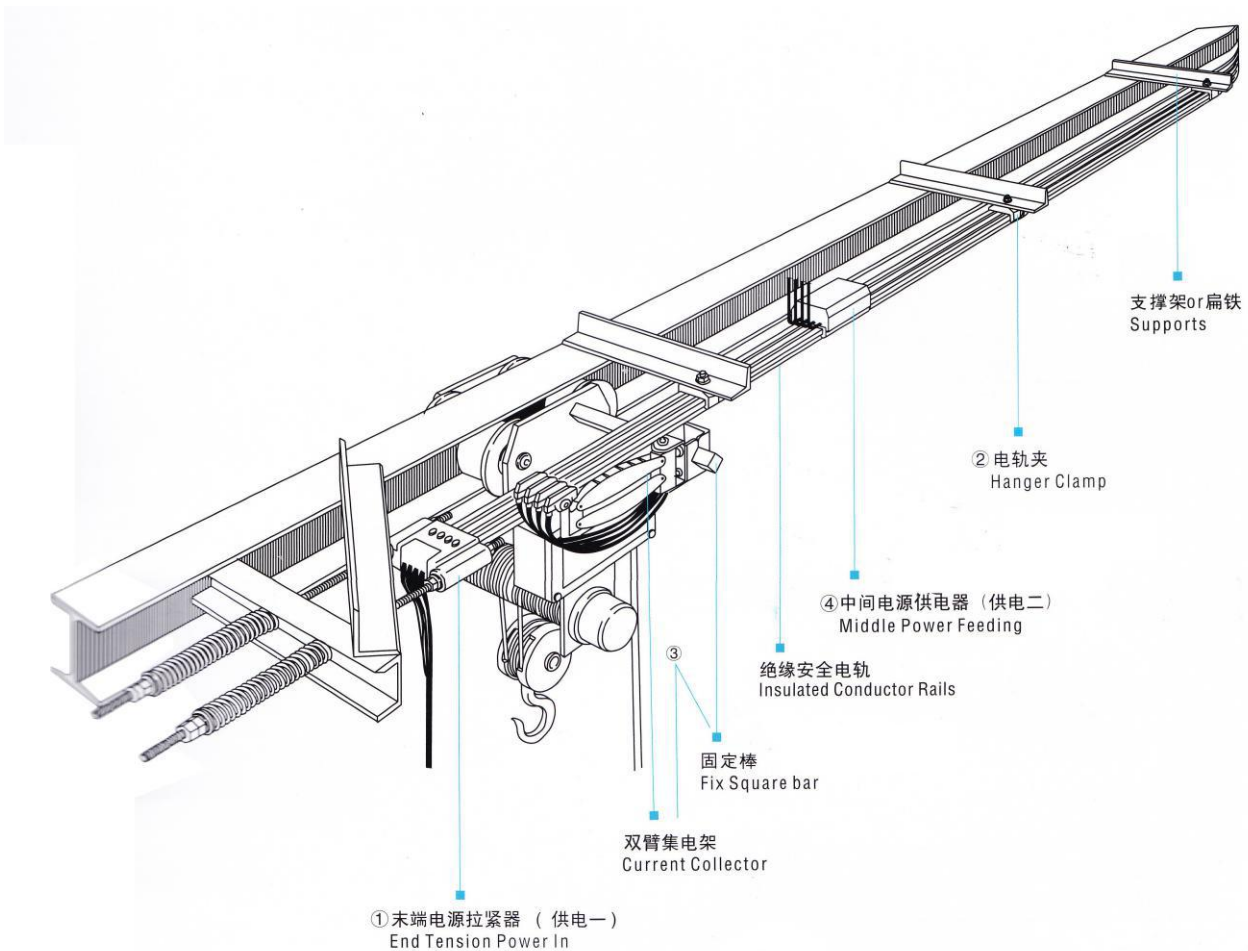


**Klifting Industrial CO.,LTD.**

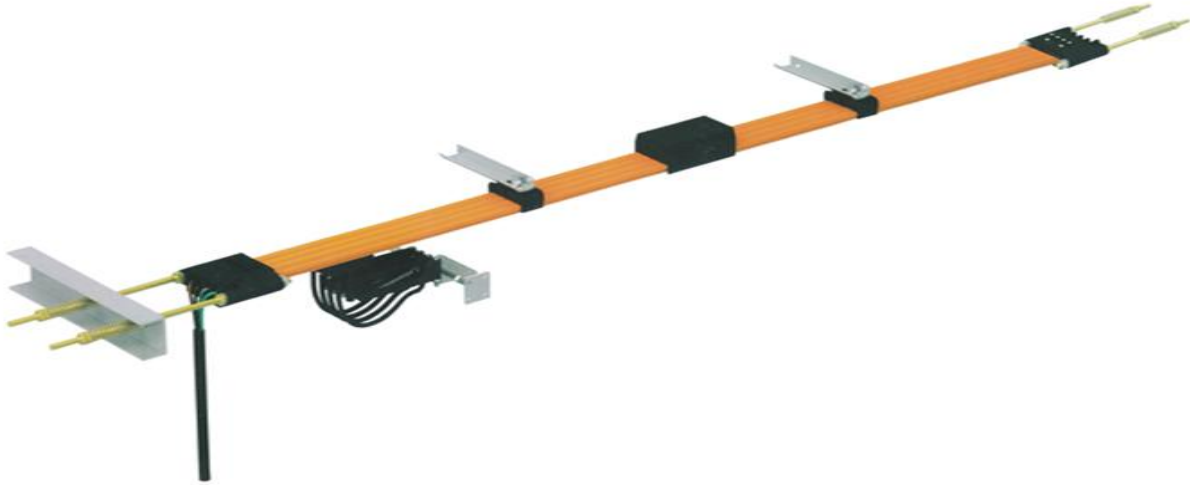
**KD Seamless Conductor Bar System  
(35A 50A 80A 100A 125A 150A 175A)**



## Catalogue

|                                  |    |
|----------------------------------|----|
| General.....                     | 1  |
| Advantage.....                   | 1  |
| Assemblies.....                  | 2  |
| Conductor bar.....               | 2  |
| Hanger clamp.....                | 4  |
| End tension& power in.....       | 4  |
| Enhanced end power puller.....   | 5  |
| Current collector.....           | 5  |
| Collector.....                   | 6  |
| Middle power feeding.....        | 6  |
| Fix square bar.....              | 7  |
| Electric rail bracket.....       | 7  |
| Clean scrubbing piece.....       | 8  |
| Busbar Copper Specification..... | 8  |
| Calculation.....                 | 9  |
| Contacts.....                    | 11 |

## Seamless conductor bar system



### General

The safety power rails are electrical conductors of various profiles that are used to provide electrical potential to moving systems along a path of travel which have 3-6 poles.

The safety power rails are available for current load from 30A up to 200A mobile electrification technology for moving transportation vehicles and equipment. Common application include: manufacturing robots, material handling system, cranes .....

Safety power rail systems are available in a variety of configuration depending on applications requirements.

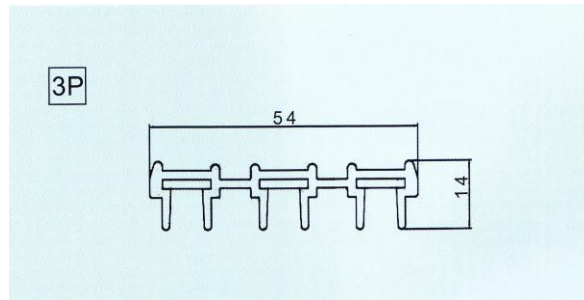
Safety power rails ( 3 IN 1, 4 IN 1, 6 IN 1 )

### Advantage

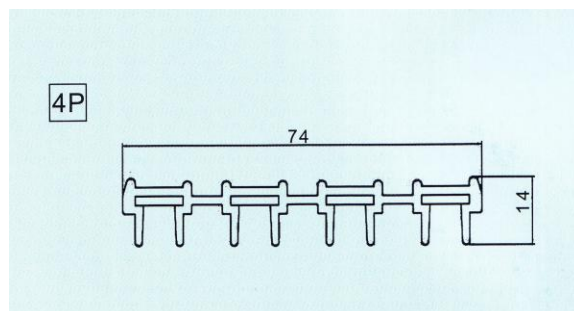
1. No joints (except power feed), safety, and neat, use indoor.
2. Integrated design, compact, easy to installation and maintenance, save time and reduce cost
3. Continuously copper inside, conductivity up to 99.99%, small voltage drop, travel steadily, and allow high travel speed, less noise.
4. Housing made of PVC, and special technology makes it anti-shock, ultraviolet protected and good physical characteristics.
5. Install radius down to 500mm, widely application.
6. Ambient temperature: PVC -15°C—+55°C

## Assemblies

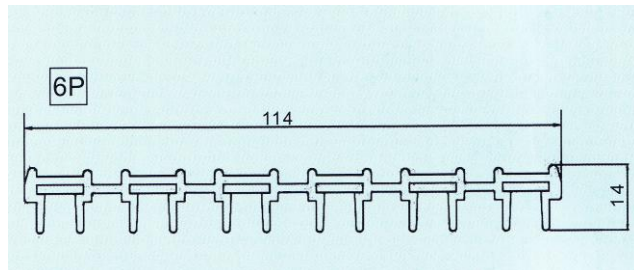
### ➤ Conductor bar



| 3P-Continuous Insulated Conductor Rails |                      |      |             |          |
|---|----------------------|------|-------------|----------|
| Type                                    | Specification        | Unit | Weight (kg) | No.      |
| KD-3-6-30A                              | 3P6 mm <sup>2</sup>  | m    | 0.59        | 73060030 |
| KD-3-10-50A                             | 3P10 mm <sup>2</sup> | m    | 0.76        | 73060050 |
| KD-3-16-80A                             | 3P16 mm <sup>2</sup> | m    | 1.04        | 73160080 |
| KD-3-20-100A                            | 3P20 mm <sup>2</sup> | m    | 1.32        | 73200100 |
| KD-3-25-125A                            | 3P25 mm <sup>2</sup> | m    | 1.60        | 73250125 |
| KD-3-35-175A                            | 3P35 mm <sup>2</sup> | m    | 1.88        | 73350175 |

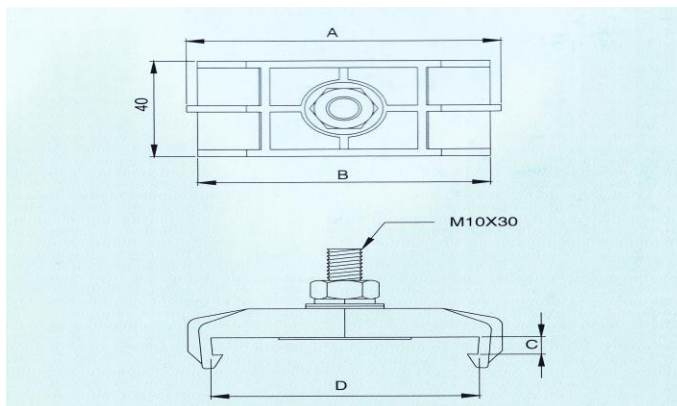


| 4P-Continuous Insulated Conductor Rails |  |      |             |          |
|---|--|------|-------------|----------|
| Type                                    | Specification                              | Unit | Weight (kg) | No.      |
| KD-4-6-30A                              | 4P6 mm <sup>2</sup>                        | m    | 0.68        | 74060030 |
| KD-4-10-50A                             | 4P10 mm <sup>2</sup>                       | m    | 0.83        | 74100050 |
| KD-4-16-80A                             | 4P16 mm <sup>2</sup>                       | m    | 1.04        | 74160080 |
| KD-4-25-125A                            | 4P25 mm <sup>2</sup>                       | m    | 1.36        | 74250125 |
| KD-4-35-175A                            | 4P35 mm <sup>2</sup>                       | m    | 1.72        | 74350175 |
| KD-4-10+1-50A                           | 4P10 mm <sup>2</sup> +1*6 mm <sup>2</sup>  | m    | 0.99        | 74101050 |
| KD-4-16+1-80A                           | 4P16 mm <sup>2</sup> +1*6 mm <sup>2</sup>  | m    | 1.05        | 74161080 |
| KD-4-20+1-100A                          | 4P20 mm <sup>2</sup> +1*10 mm <sup>2</sup> | m    | 1.14        | 74201100 |
| KD-4-25+1-125A                          | 4P25 mm <sup>2</sup> +1*10 mm <sup>2</sup> | m    | 1.23        | 74251125 |
| KD-4-30+1-150A                          | 4P30 mm <sup>2</sup> +1*10 mm <sup>2</sup> | m    | 1.36        | 74301150 |
| KD-4-35+1-175A                          | 4P35 mm <sup>2</sup> +1*10 mm <sup>2</sup> | m    | 1.49        | 74351175 |



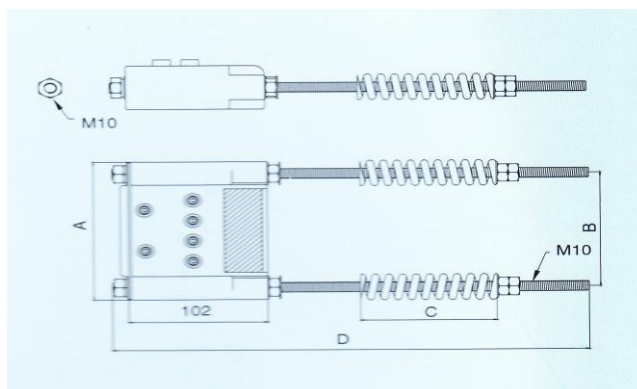
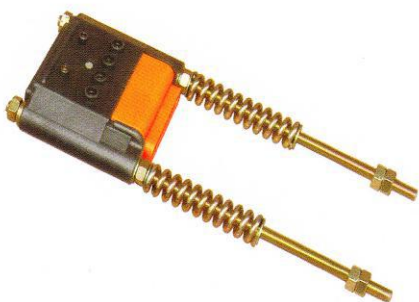
| 6P-Continuous Insulated Conductor Rails |                      |      |             |          |
|---|----------------------|------|-------------|----------|
| Type                                    | Specification        | Unit | Weight (kg) | No.      |
| KD-6-6-30A                              | 6P6 mm <sup>2</sup>  | m    | 0.95        | 76060030 |
| KD-6-10-50A                             | 6P10 mm <sup>2</sup> | m    | 1.18        | 76100050 |
| KD-6-16-80A                             | 6P16 mm <sup>2</sup> | m    | 1.41        | 76160080 |

## ➤ Hanger clamp



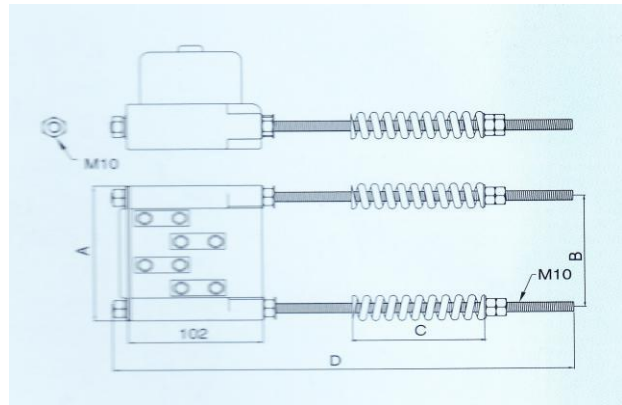
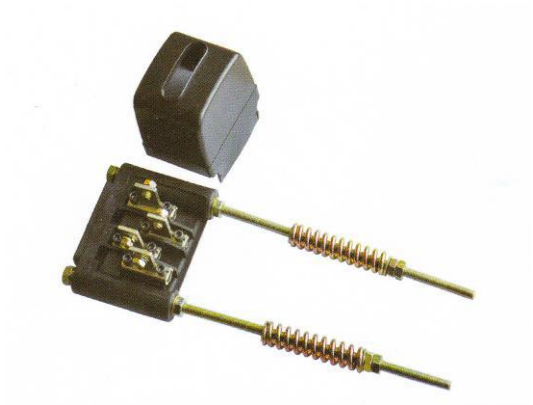
| Hanger Clamp |               |             |     |     |     |     |          |
|--------------|---------------|-------------|-----|-----|-----|-----|----------|
| Type         | Specification | Weight (kg) | A   | B   | C   | D   | No.      |
| KD-801       | 3P            | 0.065       | 69  | 63  | 8.3 | 56  | 70300801 |
| KD-802       | 4P            | 0.071       | 88  | 82  | 8.3 | 76  | 70400802 |
| KD-803       | 6P            | 0.082       | 129 | 124 | 8.3 | 116 | 70600803 |

## ➤ End tension & power in



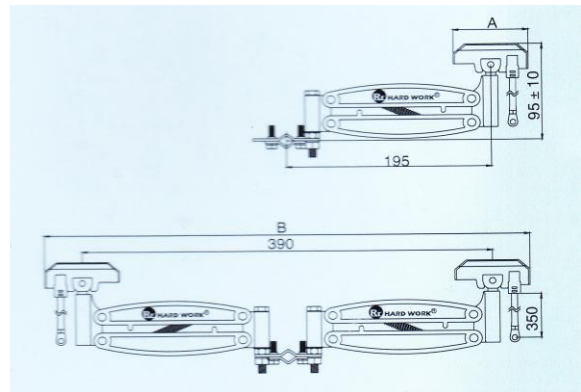
| End Tension & Power In |               |             |     |     |     |     |          |
|------------------------|---------------|-------------|-----|-----|-----|-----|----------|
| Type                   | Specification | Weight (kg) | A   | B   | C   | D   | No.      |
| KD-701                 | 3P            | 1.24        | 115 | 89  | 100 | 400 | 70300701 |
| KD-702                 | 4P            | 1.31        | 134 | 109 | 100 | 400 | 70400702 |
| KD-703                 | 6P            | 1.34        | 180 | 151 | 60  | 300 | 70600703 |

## ➤ Enhanced end power puller



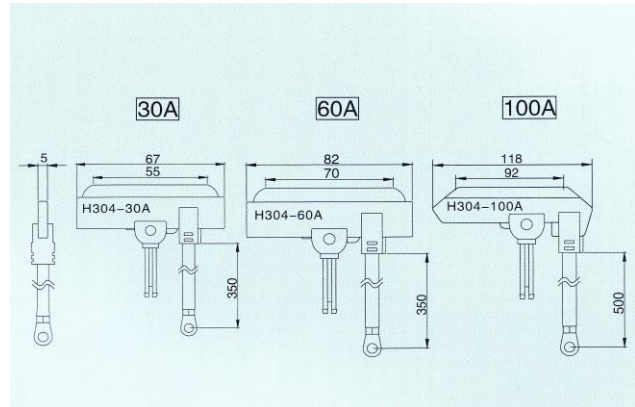
| Enhanced End Power Puller |               |             |     |     |     |     |          |
|---------------------------|---------------|-------------|-----|-----|-----|-----|----------|
| Type                      | Specification | Weight (kg) | A   | B   | C   | D   | No.      |
| KD-501                    | 4P            | 1.48/pcs    | 141 | 110 | 100 | 400 | 70400501 |

## ➤ Current collector



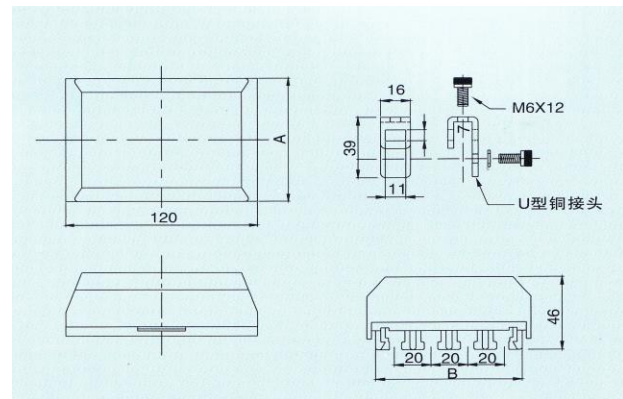
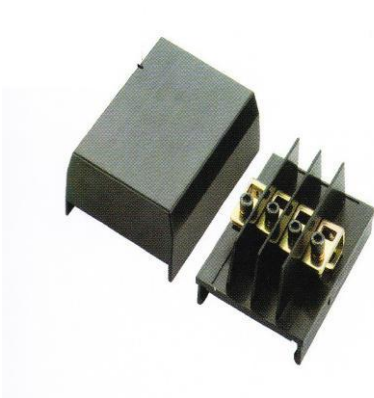
| Current Collector |               |             |     |     |          |
|-------------------|---------------|-------------|-----|-----|----------|
| Type              | Specification | Weight (kg) | A   | B   | No.      |
| KD-901            | 3P/30Amp      | 0.73        | 67  | 517 | 70330901 |
| KD-902            | 3P/60Amp      | 0.79        | 82  | 540 | 70360902 |
| KD-903            | 3P/100Amp     | 1.21        | 118 | 560 | 70310903 |
| KD-904            | 4P/30Amp      | 0.96        | 67  | 517 | 70430904 |
| KD-905            | 4P/60Amp      | 1.09        | 82  | 540 | 70460905 |
| KD-906            | 4P/100Amp     | 1.6         | 118 | 560 | 70410906 |
| KD-907            | 6P/30Amp      | 1.16        | 67  | 517 | 70630907 |
| KD-908            | 6P/60Amp      | 1.29        | 82  | 540 | 70660907 |
| KD-909            | 6P/100Amp     | 1.8         | 118 | 560 | 70610909 |

## ➤ Collector



| Collector |               |             |          |
|-----------|---------------|-------------|----------|
| Type      | Specification | Weight (kg) | No.      |
| KD-503    | 30Amp         | 0.065       | 70300503 |
| KD-504    | 60Amp         | 0.095       | 70600504 |
| KD-505    | 100Amp        | 0.22        | 70100505 |

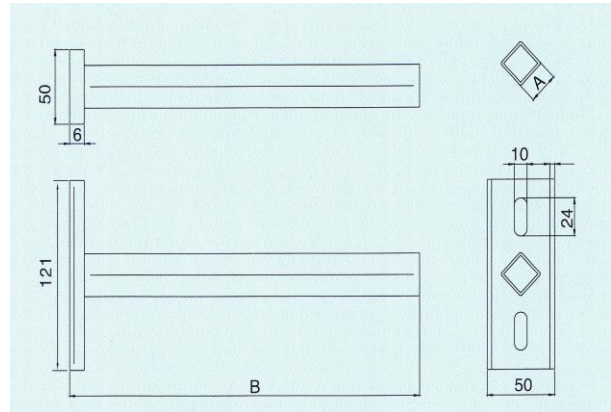
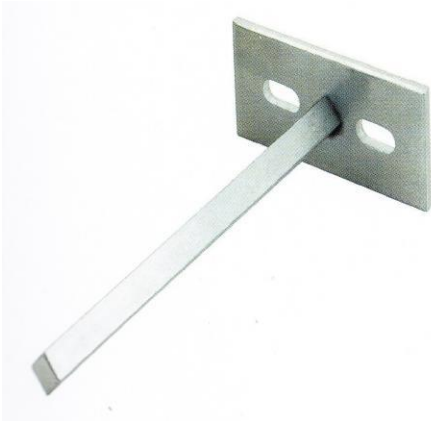
## ➤ Middle power feeding



| Middle Power Feeding |               |             |     |     |          |
|----------------------|---------------|-------------|-----|-----|----------|
| Type                 | Specification | Weight (kg) | A   | B   | No.      |
| KD-506               | 3P            | 0.2         | 69  | 60  | 70300506 |
| KD-507               | 4P            | 0.26        | 90  | 81  | 70400507 |
| KD-508               | 6P            | 0.4         | 120 | 122 | 70600508 |

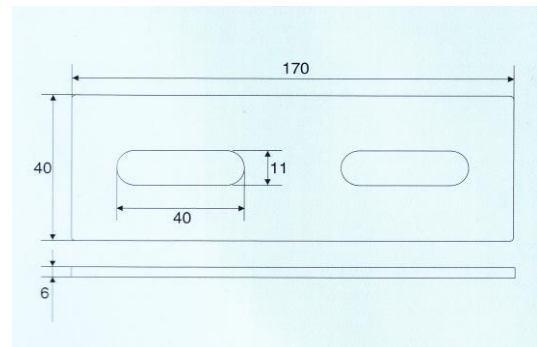
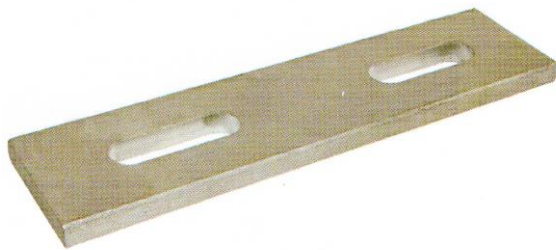


## ➤ Fix square bar



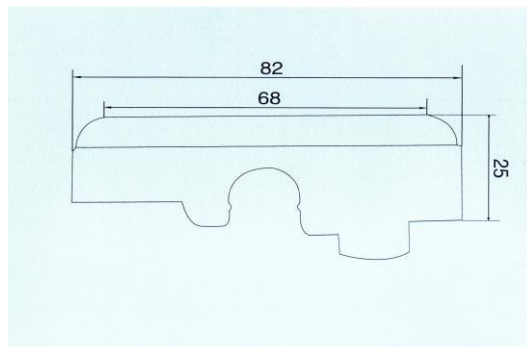
| Fix Square Bar |             |      |     |          |
|----------------|-------------|------|-----|----------|
| Type           | Weight (kg) | A    | B   | No.      |
| KD-704         | 0.54        | 12.6 | 230 | 70000704 |
| KD-705         | 0.67        | 12.6 | 330 | 70000705 |

## ➤ Electric rail bracket



| Electric rail bracket |               |             |          |
|-----------------------|---------------|-------------|----------|
| Type                  | Specification | Weight (kg) | No.      |
| KD-706                | 3P,4P         | 0.28        | 70340706 |

## ➤ Clean scrubbing piece



| Clear scrubbing piece |               |             |          |
|-----------------------|---------------|-------------|----------|
| Type                  | Specification | Weight (kg) | No.      |
| KD-707                | 80Φ           | 0.022       | 70800707 |
| KD-708                | 120Φ          |             | 70120708 |

## Busbar Copper Specification

| Amps | Copper weight (G/M) | Copper Thickness (mm) | Copper width (mm) | Copper Squaremm <sup>2</sup> |
|------|---------------------|-----------------------|-------------------|------------------------------|
| 25A  | 43.17g              | 0.50mm                | 9.70mm            | 4.85mm <sup>2</sup>          |
| 30A  | 56.11g              | 0.65mm                | 9.70mm            | 6.305mm <sup>2</sup>         |
| 35A  | 69.06g              | 0.80mm                | 9.70mm            | 7.76mm <sup>2</sup>          |
| 40A  | 73.76g              | 0.85mm (Market GB)    | 9.75mm            | 8.2875mm <sup>2</sup>        |
| 40A  | 78.50g              | 0.90mm(GB)            | 9.80mm            | 8.82mm <sup>2</sup>          |
| 45A  | 90.65g              | 1.05mm                | 9.70mm            | 10.185mm <sup>2</sup>        |
| 55A  | 104.13g             | 1.20mm(GB)            | 9.75mm            | 11.7mm <sup>2</sup>          |
| 55A  | 103.60g             | 1.20mm                | 9.70mm            | 11.64mm <sup>2</sup>         |
| 60A  | 120.86g             | 1.40mm                | 9.70mm            | 13.58mm <sup>2</sup>         |
| 70A  | 125.82g             | 1.45mm(Market GB)     | 9.75mm            | 14.1375mm <sup>2</sup>       |
| 70A  | 130.83g             | 1.50mm (GB)           | 9.80mm            | 14.7mm <sup>2</sup>          |
| 75A  | 138.13g             | 1.60mm                | 9.70mm            | 15.52mm <sup>2</sup>         |
| 85A  | 155.39g             | 1.80mm                | 9.70mm            | 17.46mm <sup>2</sup>         |
| 105A | 194.24g             | 2.25mm                | 9.70mm            | 21.825mm <sup>2</sup>        |
| 110A | 200.61g             | 2.30mm(GB)            | 9.80mm            | 22.54mm <sup>2</sup>         |
| 140A | 250.36g             | 2.90mm                | 9.70mm            | 28.13mm <sup>2</sup>         |
| 145A | 258.99g             | 3.00mm                | 9.70mm            | 29.1mm <sup>2</sup>          |
| 160A | 284.89g             | 3.30mm                | 9.70mm            | 32.01mm <sup>2</sup>         |
| 225A | 405.84g             | 2.4mm                 | 19mm              | 45.6mm <sup>2</sup>          |

## Calculation

Please offer these information if you need our products.

Company Name: \_\_\_\_\_ Contact \_\_\_\_\_  
Project: \_\_\_\_\_ Address: \_\_\_\_\_  
E-mail: \_\_\_\_\_ Project: \_\_\_\_\_  
Telephone: \_\_\_\_\_ Fax: \_\_\_\_\_  
Date: \_\_\_\_\_

1. Type of crane/machine to be electrified:
2. Voltage: \_\_\_\_\_ Volts ~/=: \_\_\_\_\_ Phases: c/s:
3. Length of conductor system:
4. Number of conductors required: \_\_\_\_\_ power lines: \_\_\_\_\_ control lines: \_\_\_\_\_ neutral (ground):
5. Indoor: \_\_\_\_\_ Outdoor: \_\_\_\_\_
6. Special site conditions (humidity, dust, chemical influence etc.):
7. Temperature conditions: \_\_\_\_\_ °C min., \_\_\_\_\_ °C max.
8. Type of conductors preferably wanted:
9. Number and position of feeder points:
10. Mounting position envisaged:  
(prints and sketches should be submitted whenever obtainable)
11. Number of cranes / machines fed from the one system:
12. Ampere load of each crane / machine:
13. Other pertinent data:

For curved tracks, breaks in system etc. please submit prints and sketches.

| Motor (please mark run simultaneously and at the same time start the motor)      | Crane 1 |               |                   |     |                  |                   |              |
|--|---------|---------------|-------------------|-----|------------------|-------------------|--------------|
|  | P/(KW)  | Rated current |                   |     | Starting current |                   |              |
|  |         | A             | COSφ <sup>N</sup> | %ED | A                | COSφ <sup>A</sup> | Start Method |
| Main Hoisting  |         |               |                   |     |                  |                   |              |
| Aux. Hoisting  |         |               |                   |     |                  |                   |              |
| Main Traverse  |         |               |                   |     |                  |                   |              |
| Aux. Traverse  |         |               |                   |     |                  |                   |              |
| Main Travel  |         |               |                   |     |                  |                   |              |
| Aux. Travel  |         |               |                   |     |                  |                   |              |
| Slewing  |         |               |                   |     |                  |                   |              |
| Luffing and any other Service  |         |               |                   |     |                  |                   |              |
| The type of motor : K:Squirrel-cage motors; S:Slip-ring motors; F:Inverter motor |         |               |                   |     |                  |                   |              |
| Motor (please mark run simultaneously and at the same time start the motor)      | Crane 2 |               |                   |     |                  |                   |              |
|  | P/(KW)  | Rated current |                   |     | Starting current |                   |              |
|  |         | A             | COSφ <sup>N</sup> | %ED | A                | COSφ <sup>A</sup> | Start Method |
| Main Hoisting  |         |               |                   |     |                  |                   |              |
| Aux. Hoisting  |         |               |                   |     |                  |                   |              |
| Main Traverse  |         |               |                   |     |                  |                   |              |
| Aux. Traverse  |         |               |                   |     |                  |                   |              |
| Main Travel  |         |               |                   |     |                  |                   |              |
| Aux. Travel  |         |               |                   |     |                  |                   |              |
| Slewing  |         |               |                   |     |                  |                   |              |
| Luffing and any other Service  |         |               |                   |     |                  |                   |              |
| The type of motor : K:Squirrel-cage motors; S:Slip-ring motors; F:Inverter motor |         |               |                   |     |                  |                   |              |

## Contacts

### **Klifting Industrial CO.,LTD.**

### **Baoding Zhongze I/E Co.,Ltd.** (Exclusive sales)

ADD: ROOM 206, INNOVATION CENTER BUILDING, NO.3188, NORTH HENGXIANG STREET,  
BAODING , HEBEI , CHINA

Tel: 0086-186-0332-3110

Fax: 0086-312-315-2365

Website: [www.klifting.com](http://www.klifting.com)

For further information of KD Seamless conductor bar, please contact us in the above ways.

We commit ourselves to constant improvement of our design and processing of the products.

We keep the right of perfecting the instruction book and the product design to achieve the goal.

It's important to select the suit Safe Conductor Bar for each application. Otherwise it will cause serious consequences , such as property damage or personal injury.